



What are you doing about EMR?

Dear Physician,

The American Recovery and Reinvestment Act of 2009 (ARRA) will provide approximately \$19 billion for Medicare and Medicaid HIT incentives over five years. The bill provides financial incentives through the Medicare program to encourage physicians and hospitals to adopt and use certified electronic health records (EHR) interoperatively and in a meaningful way. Early adopters (in 2011 or 2012) will be eligible for an initial incentive payment. Incentive payments will be reduced each year. After 2015, physicians who do not adopt/use a certified HIT system will face reduction in their Medicare fee schedule. E-prescribing penalties will sunset after 2014. The bill requires HHS to adopt standards for qualified EHRs by December 31, 2009 (H.R. 1 stimulus bill, AMA, 2009).

Independent Physicians Association of Lee County, Lee County Medical Society and LMHS would like to get a better idea of the attitudes and needs of the physician community regarding EMR. We are especially interested in input from physicians who are not currently using EMR. One of our goals is to determine how we can facilitate effective adoption of EMR. **Please go to the IPALC web site www.ipalc.org and follow the link to the survey.** Also, please visit the electronic medical records page for more current information regarding EMR. Results will be posted on the IPALC web site. We appreciate your participation.

This survey is a joint effort of IPALC, Lee County Medical Society and LMHS.

Continuing Medical Education

It's not too late!

The Children's Hospital of
Southwest Florida
7th Annual Pediatric Conference



April 25 & 26, 2009
Sanibel Harbour Resort & Spa
11 CME Credits

Mark Dorfman, M.D., Lucky Jain,
M.D., Sheldon Kaplan, M.D.,
Benjamin Gold, M.D., Michael
Radetsky, M.D., Larry Pickering,
M.D., Jose Colon, M.D., and Bruce
Schnapf, D.O.

Topics include immunizations,
GERD, seizure disorders, asthma,
the late preterm infant, MRSA,
infectious diseases and pediatric
ophthalmology.

For conference info:
www.leememorial.org/childrenhospital
or call 574-0397

May 2009

CME Opportunities

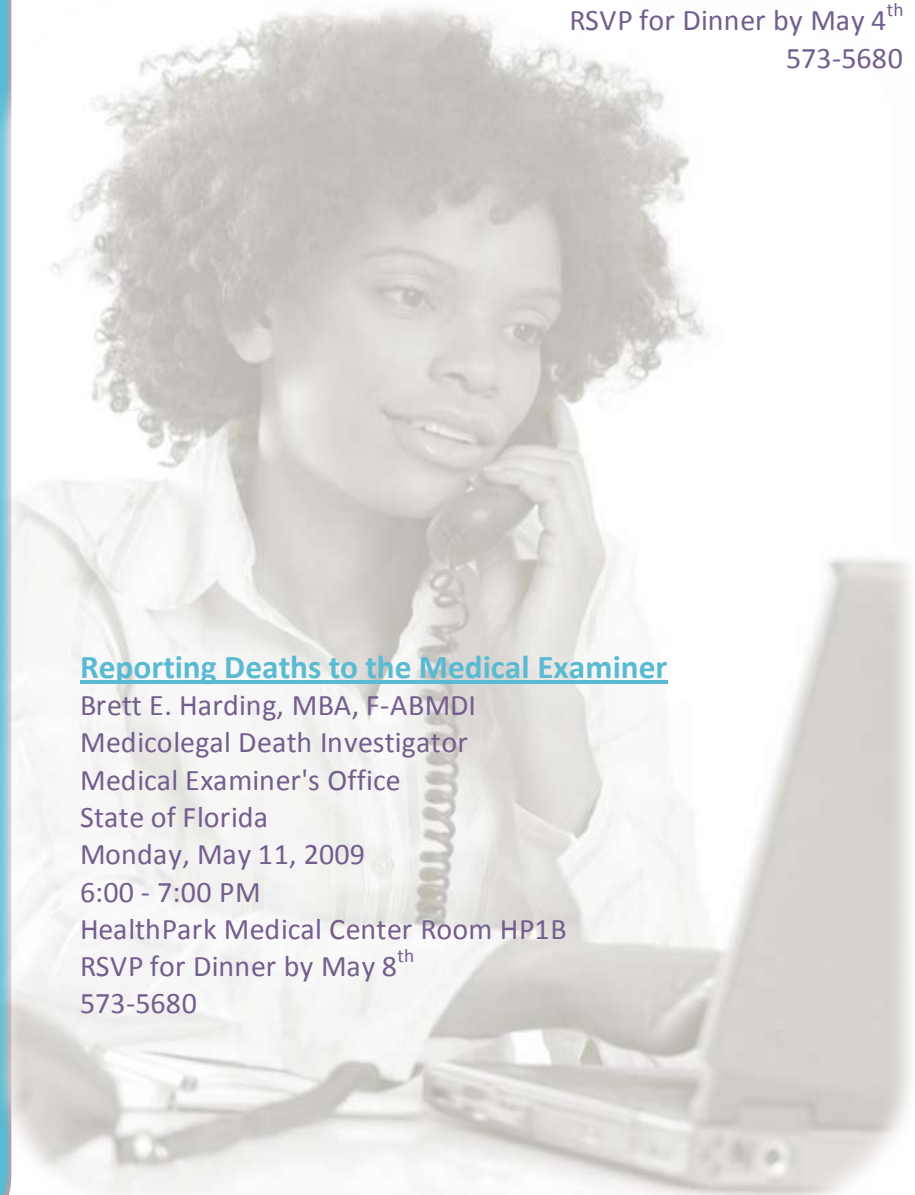
Domestic Violence: The Survivor and the Health Care Provider Role

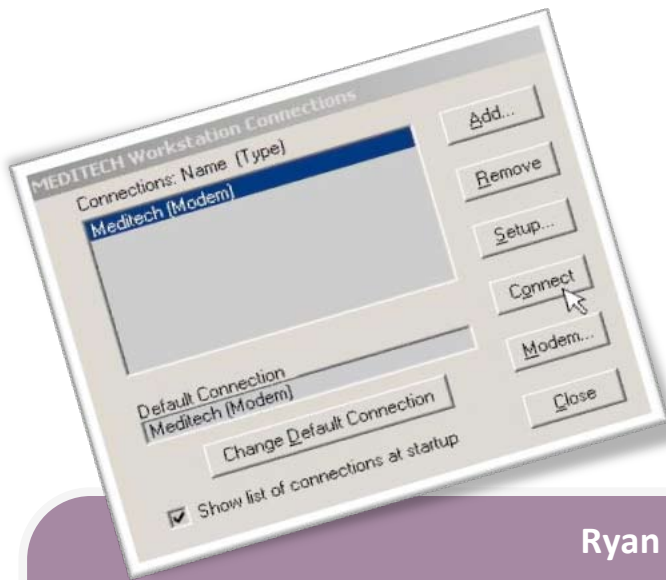
Colleen Henderson, ACT
Wednesday, May 6, 2009
6:30 - 8:30 PM

Lee Memorial Hospital Auditorium
RSVP for Dinner by May 4th
573-5680

Reporting Deaths to the Medical Examiner

Brett E. Harding, MBA, F-ABMDI
Medicolegal Death Investigator
Medical Examiner's Office
State of Florida
Monday, May 11, 2009
6:00 - 7:00 PM
HealthPark Medical Center Room HP1B
RSVP for Dinner by May 8th
573-5680





Meditech Downtime

Sunday April 26th, beginning 11:00 pm through Monday April 27th 1:00 am **Meditech** will be affected by a two hour interruption to accommodate a Meditech operating system upgrade. From 11:00 pm Sunday until Monday 1:00 am, all modules of Meditech will be unavailable. If the downtime completes sooner than expected, users can sign on and use the system. Because of the late hour there will be no overhead page. We appreciate your patience during this time. Please call the Information Systems Help Desk at 239-343-7900 if you have any questions.

Ryan McCleskey Redfish Challenge – May 16, 2009

A challenge for a great cause - to build awareness of Lee Memorial Health System's Foundation and to assist the children of Southwest Florida in their personal battles with pediatric oncology. Proceeds raised will benefit Barbara's Friends - The Children's Hospital Cancer Fund in honor of Ryan McCleskey who lost his battle with cancer and was an avid fisherman. Call the Foundation at 239-985-3550 for more information, or visit www.ryanmccleskeyredfishchallenge.com.




Barbara's Friends
The Children's Hospital Cancer Fund
Lee Memorial Health System Foundation

Better Communication?

Count On It!

In order to enhance communication between LMHS and you, we would like to accommodate your individual preferences of contact. Routine communication will continue to be provided through the monthly newsletter, our website, physician lounge postings, etc. We would like to relay important information specific to you through additional avenues. Information provided will respectfully be maintained in our Medical Staff Services database.

This enhancement has been approved by the Physician Leadership Council and Facility Medical Executive Committees.

If you have any questions or concerns, we want to help! Contact Yvonne O'Brien, Physician Services Director, at 239-573-3820 or yvonne.obrien@leememorial.org.

Please take a moment to let us know what methods will work best for you at the following link on our website:

<http://www.leememorial.org/physicianpub/physicianservices.asp>



Physician Practice Updates

Abraham Sadighi, MD and Michael Novotney, MD of Vascular & General Surgical Consultants have relocated to 8010 Summerlin Lakes Drive, #100, Fort Myers, 33907. The new fax number is 239-939-5895.

Southwest Florida Emergency Physicians have relocated to 13681 Doctors Way, Fort Myers, 33912. Phone: 239-343-0434, Fax: 239-343-0299.

Robert Casola, DO and John Bishop, MD of the Wound Care and Hyperbaric Medicine Clinic located in the CHCC (COTS) building on Fowler and Winkler **has not moved**. The phone number remains the same, 239-939-8345.

Charles Henry, M.D. – Teleradiology (Lee/HP, CCH, GCMC)
Medical degree from Wayne State University School of Medicine; internship at Providence Hospital and Medical Center; Radiology residency and Body Imaging fellowship at Wayne State University; certified by the American Board of Radiology. Joined Virtual Radiologic Consultants.

Warren Hutcheson, M.D. –Emergency Medicine (LMH/HP)
Medical degree and Pediatrics residency at Southern Illinois University; Pediatric Emergency Medicine fellowship at Children’s Hospital of Oklahoma; certified by the American Board of Pediatrics-Emergency Medicine. Joined Lee Emergency Physicians.

Marianne Krouk, D.O. – Psychiatry (LMH/HP, CCH, GCMC)
Osteopathic degree and internship at Philadelphia College of Osteopathic Medicine; Adult Psychiatry and Child Psychiatry residency at the Medical College of Pennsylvania; certified by the American Board of Psychiatry and Neurology in Child and Adolescent Psychiatry. Solo practitioner.

Jinoo Tommy Lee, M.D. – Family Practice (LMH/HP, CCH)
Medical degree from St. Matthew’s University School of Medicine in Belize; Family Practice Residency at Greenville Hospital, University Medical Center; certified by the American Board of Family Medicine. Joined the Hospitalist Group of SW Florida.

Adikkan Rajagopal, M.D. – Anesthesiology (GCMC)
Medical degree at Thanjavur Medical College; internship at Altoona Hospital; Anesthesiology Residency at the University of Illinois at Chicago Medical Center; certified by the American Board of Anesthesiology in Anesthesia and Pain Management. Joined Anesthesia & Pain Consultants.

Henry Zimmerman, M.D. – Emergency Medicine (LMH/HP)
Medical degree from Eastern Virginia Medical School; Emergency Medicine Residency from Allegheny General Hospital; certified by the American Board of Emergency Medicine. Joined Lee Memorial Emergency Physicians.

*Welcome
New
Physicians*

Documentation: Excellence Among Us

Example of providing bacteria with the site of infection and whether or not it is device related

Dr. James M. Toomey: "Urinary tract infection, complicated, with coagulase-negative Staphylococcus. This most likely is associated with recent catheter at the time of bladder irrigation for hematuria as the UA prior to cath showed only hematuria and no signs of inflammation nor nitrite."

Example of documenting the link between device and condition

Dr. Shaheen Faruque: "Right groin cellulitis secondary to catheterization."

Example of being pro-active in clarification and saving a back-end query for further information

Dr. Scott Dunbar: "Reason for consult: Possible pathological fracture. Impression: Rule out multiple myeloma." (The pathology report was not yet back at the time of dictation.) As soon as the pathology report was on the chart, he added this addendum, "path findings were negative and multiple myeloma was ruled out."

Example of compliance with new documentation requirements for CHF:

Dr. Daniel de la Torre: "Assessment: Congestive heart failure, likely both right and left-sided, systolic in nature, given the patient's history of cardiomyopathy, and acute on chronic, given the patient's history."

Example of linking a chronic Foley with an acute UTI

Dr. Douglas Brust: "IMPRESSION: A man who has chronic Foley with symptomatic urinary tract infection."

Example of un-linking a urinary catheter from the acute UTI

Dr. Harris Bonnette: "She was treated for a non-Foley related urinary tract infection without sepsis."

Questions about documentation? Please contact Janelle I. Wissler, RHIA, CCS, CMT, Data Quality Manager, HIM, at 239-985-8711 or janelle.wissler@leememorial.org

Here's to Dr. Bailey!

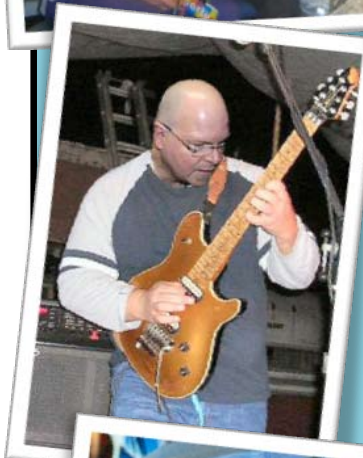
David O. Bailey, MD of Florida Heart Associates has been awarded Physician of the Month for March 2009.

The Cardiac Cath Lab at Gulf Coast Medical Center congratulates you, Dr. Bailey, for going above and beyond our expectations!





Happy Doctors Day



2009 - Our Docs Rock!



Medical Staff Leadership

GULF COAST MEDICAL CENTER

MEDICAL STAFF PRESIDENT
 Gary Correnti, MD
 PRESIDENT ELECT
 Charles Bisbee, MD
 PAST PRESIDENT
 James Borden, MD, SWFRMC
 SECRETARY
 William Hearn, DO
 CHAIRMAN - MEDICINE
 Sunil Lalla, MD
 CHAIRMAN - SURGERY
 Richard Lane, MD
 CHAIRMAN - OB/GYN
 Steven Sager, DO
 CHAIRMAN - PEDIATRICS
 Emilio Del Valle, MD
 CHAIRMAN - ANESTHESIA
 Charles Homolka, MD
 CHAIRMAN - EMERGENCY MEDICINE
 Larry Hobbs, MD
 CHAIRMAN - PATHOLOGY
 Larry Seidenstein, MD
 CHAIRMAN - RADIOLOGY
 Randy Knific, MD

CAPE CORAL HOSPITAL

MEDICAL STAFF PRESIDENT
 Timothy Dougherty, MD
 PRESIDENT ELECT
 David Reardon, MD
 PAST PRESIDENT
 Thomas Carrasquillo, MD
 SECRETARY
 Donn Fuller, MD
 CHAIRMAN - MEDICINE
 Timothy Keys, MD
 CHAIRMAN - SURGERY
 Alexander Lozano, MD
 CHAIRMAN - OB/GYN
 George Kovacevic, MD
 CHAIRMAN - CLINICAL DEPT OF THE CHILDREN'S HOSPITAL
 Emad Salman, MD

HEALTHPARK MEDICAL CENTER AND LEE MEMORIAL HOSPITAL

PRESIDENT
 F. Brett Shannon, DO
 PRESIDENT ELECT
 Ralph Gregg, MD
 CHAIRMAN - MEDICINE
 Jon Burdzy, DO
 CHAIRMAN - SURGERY
 Randall Buss, MD
 CHAIRPERSON - OB/GYN
 Judith Krammer, MD
 CHAIRMAN - THE CHILDREN'S HOSPITAL (PEDIATRICS)
 Emad Salman, MD
 CHAIRMAN - PATHOLOGY
 George Kalemeris, MD
 CHAIRMAN - RADIOLOGY
 Jeffrey Sonn, DO
 CHAIRMAN - EMERGENCY MEDICINE
 Michael Dunn, MD

Medical Library opens for business at Gulf Coast Medical Center

The library open house will be held from 8 am until noon on Tuesday, April 21st and is easily accessible by the Metro Parkway entrance. All LMHS physicians are invited to check it out. The library staff will be available to answer any questions and assist with any health or medicine-related research.



Sandie Lawyer
 Secretary, Nursing Administration and
 Narges Ahmadi
 Medical Librarian



The GCMC Medical Library is open Monday to Friday from 7 a.m. to 3:30 p.m. To access it after hours please call the Security office.

We will see you in the library!

PRESORTED
 STANDARD
 U.S. POSTAGE PAID
 FT. MYERS, FL
 PERMIT NO. 131

P.O. Box 2218, Fort Myers, Florida 33902

**LEE MEMORIAL
 HEALTH SYSTEM**